

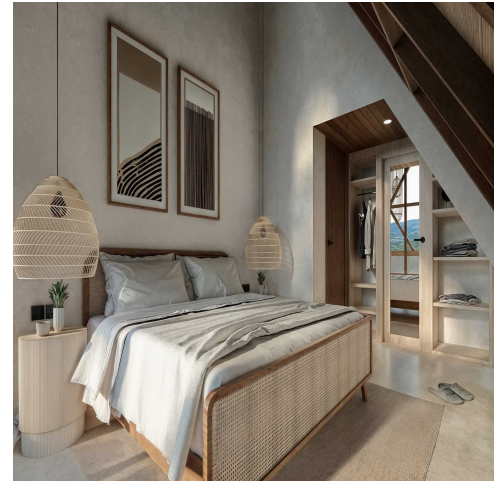


BALI – REAL ESTATE  
EXCEPTION

Where your exceptional journey begins

www.stg-baliexceptioncom-  
dev.kinsta.cloud  
@baliexceptionsales  
salesadmin@baliexception.com

# OFFPLAN 2 BEDROOM VILLA FOR SALE LEASEHOLD IN KEDUNGU



## Features

Property ID	BE-1023	Bathrooms	2
Price	\$193,300	Leasehold	25 years
Land Area	200 sqm		
Property Size	120 sqm		
Bedrooms	2		

## Discover a Stunning 2-Bedroom Villa in Kedungu – Perfect for a Peaceful Retreat or Investment

Discover this stunning 2-bedroom villa nestled in the serene Kedungu area, known for its tranquil surroundings and beautiful surfing beaches nearby. Located just a quick 2-minute drive from popular beaches, cafes, gyms, and restaurants, this villa is an ideal choice for those looking to buy a villa in Bali that offers both luxury and convenience.

### Key Features Include:

- **Prime Location:** Situated in the peaceful Kedungu area, just minutes from popular beaches and amenities, offering the perfect blend of tranquility and accessibility.
- **Tropical Modern Design:** The villa spans 200 sqm of land with a 120 sqm built size, showcasing a unique modern tropical design that merges elegance with comfort.
- **Luxurious Amenities:** Featuring two spacious bedrooms, a private swimming pool with views of rice fields, and a semi-open living space that blends indoor and outdoor living.
- **Fully Equipped Kitchen:** The modern kitchen is perfect for culinary endeavors, while a spacious workspace adds convenience for those who work from home.
- **Investment Opportunity:** This villa is not just a peaceful retreat; it's also a perfect real estate investment with excellent potential returns.

Don't miss out on the chance to make this dream villa your own—contact us now to secure this exceptional property!

## We Love

- The prime location
- The tropical modern design
- The good investment

## Key Information

- **Leasehold:** 25 years + 5 years extension
- **Price:** 2,990,000,000 IDR
- **Estimated Delivery Date:** 12 months after deposit