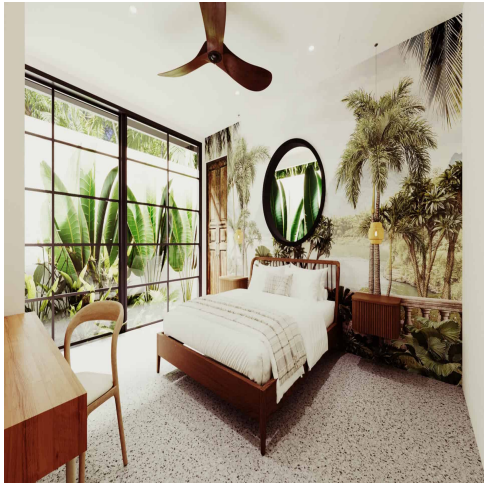


Where your exceptional journey begins

www.baliexception.com
@baliexceptionsales
salesadmin@baliexception.com
+62 813 9959 4112

STYLISH 2
BEDROOM
VILLA NEAR
DREAMLAND
BEACH FOR
SALE IN



Features

Property ID	BE-1154	Bathrooms	2
Price	\$260,000	Leasehold	26 Years
Land Area	226 sqm	Delivery Date	September 2025
Property Size	110,9 sqm		
Bedrooms	2		

Discover this stunning villa in Pecatu Uluwatu, ideally situated near excellent restaurants, charming cafes, and vibrant beach clubs. It's just a 5-minute motorbike ride to Dreamland Beach, 8 minutes to Bingin Beach, 2 minutes to New Kuta Golf, and 8 minutes to Bambu Fitness. This villa features a modern tropical design, with a land size of 226 sqm and a well-planned build size of 110.9 sqm. Inside, you'll find 2 bedrooms, 2 bathrooms, a living room, a kitchen, and a dining area. The villa's standout features include a sparkling swimming pool, a chic sunbed, and a fireplace, perfect for relaxing and entertaining. Don't miss out on this exceptional investment opportunity in a prime location! **WE LOVE** The proximity to the beach The modern tropical design The outdoor area **KEY INFORMATION** Leasehold (26 Years) + 10-20 years Price : 260,000 USD Key handover in : September 2025