

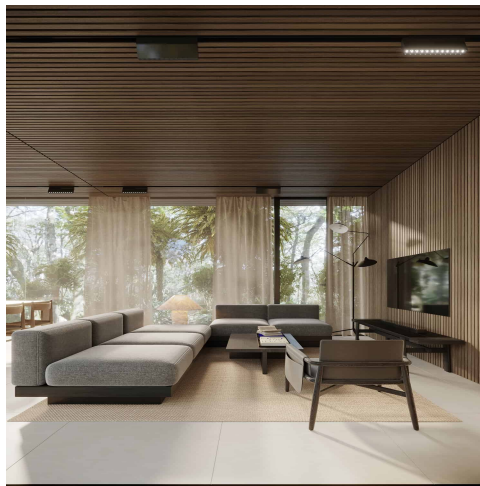


BALI—REAL ESTATE
EXCEPTION

Where your exceptional journey begins

www.stg-baliexceptioncom-
dev.kinsta.cloud
@baliexceptionsales
salesadmin@baliexception.com

EXCLUSIVE 1 BEDROOM VILLA CLOSE TO DREAMLAND BEACH FOR



Features

Property ID	BE-869	Bathrooms	1
Price	\$220,000	Leasehold	21,5 Years
Land Area	195-217 sqm	Delivery Date	September 2025
Property Size	65 sqm		
Bedrooms	1		

Exquisite Off-Plan Villas in Bukit

Nestled in the heart of Bukit, this exquisite off-plan villa offers proximity to the ocean, with cafes, restaurants, and vibrant beach clubs just a stone's throw away. It's only a 2-minute ride by motorbike to the popular Dreamland Beach.

Property Features:

- Design:** Modern masterpiece with a sophisticated design featuring expansive living spaces, including a chic living room, a fully equipped kitchen, and an elegant dining area.
- Outdoor Oasis:** Private oasis with a sparkling pool and a cozy fireplace, perfect for entertaining or unwinding in style.
- Highlight:** A golden opportunity for savvy investors seeking both beauty and value.

WE LOVE:

- The proximity to the beach
- The elegant design
- The investment potential

KEY INFORMATION:

- Leasehold:** 21.5 years (extension + 15 years)
- Prices:**
 - 1 Bedroom:** Building size 65 sqm, Land size 195-217 sqm, Price = USD 220,000
 - 2 Bedrooms:** Building size 104 sqm, Land size 181-217 sqm, Price = USD 240,000
 - 3 Bedrooms:** Building size 120 sqm, Land size 146-202 sqm, Price = USD 330,000
- Key Handover:** September 2025