

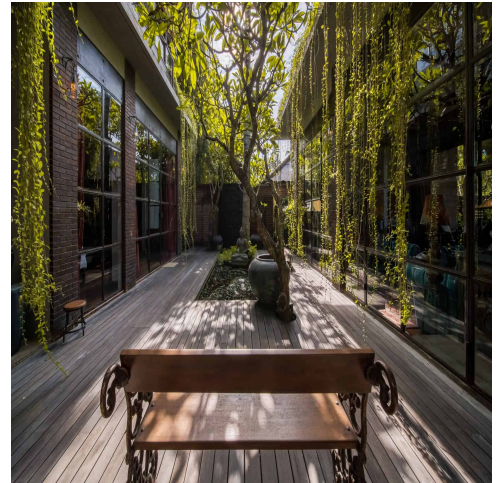
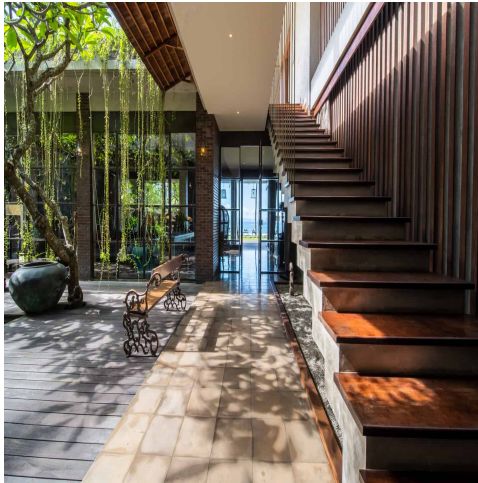
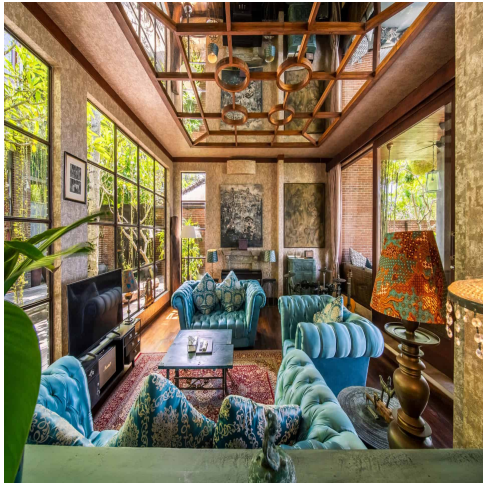


BALÍ—REAL ESTATE
EXCEPTION

Where your exceptional journey begins

www.baliexception.com
@baliexceptionsales
salesadmin@baliexception.com
+62 813 9959 4112

EXCLUSIVE BEACHFRONT T 6 BEDROOM VILLA FOR SALE



Features

Property ID	BE-958	Bathrooms	6
Price	\$0	Leasehold	50 years
Land Area	2100 sqm		
Property Size	760 sqm		
Bedrooms	6		

- Situated in the picturesque beachfront area of Candidasa, Villa Manis Beachfront is a stunning six-bedroom property that captures the essence of Balinese luxury. This prime location offers tranquility and natural beauty while still being conveniently close to local attractions and amenities. The area is well known for snorkeling and diving activities, and it provides easy access to visit the nearby islands of Nusa Lembongan and Nusa Penida. With direct access to the pristine white sandy beach, the villa spans 2,100 square meters of lush tropical landscape and boasts 760 square meters of sophisticated living space. Each of the six luxurious bedrooms, spread over two levels, features an en-suite bathroom. The villa's unique features include the ability to book a private boat for direct pick-up from the property, a pool house, a lounge deck, and an alfresco dining area set within a spacious tropical garden. Furthermore, the villa boasts a chill-out terrace area with an outdoor jacuzzi, a sauna in the garden with sea views, and a garden area for badminton and yoga practice. These elements, combined with large living areas offering stunning ocean views, make Villa Manis Beachfront a perfect getaway for families or groups. The serene surroundings, high-end amenities, and exceptional design make this property an ideal investment opportunity in Bali's real estate market. **WE LOVE** The exclusive beachfront with white sand beach location villa
- The wide tropical garden perfect for a private event
- The contemporary architectural style while integrating the timeless materials of Bali
- **KEY INFORMATION** Price: On demand
- Leasehold: 50 years
- *Extension of the current lease term by 30 years to a total of 80 years is possible, DM us for price*