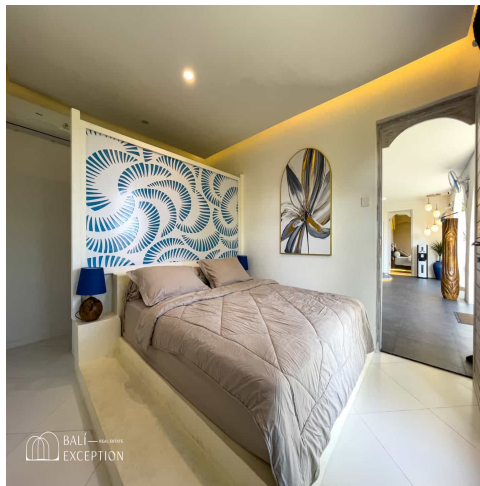


Where your exceptional journey begins

www.baliexception.com  
@baliexceptionsales  
salesadmin@baliexception.com  
+62 813 9959 4112

# CONTEMPORARY DESIGN WITH GREENERY VIEW 3 BEDROOM



## Features

Property ID	BE-1296
Price	\$230,000
Land Area	230 sqm
Property Size	169 sqm
Bedrooms	3

Bathrooms	2
Leasehold	25 Years

This stunning villa is perfectly situated in Uluwatu, one of Bali's most sought-after areas, known for its proximity to vibrant cafes, restaurants, and the iconic GWK. Nestled in a prime, central location, this villa offers the ultimate blend of modern luxury and serene surroundings. With a contemporary design and unique interior finishes, the villa sits on 230 sqm of land, with 168 sqm of living space. It features 3 bedrooms, 2 bathrooms, an enclosed living area, a stylish kitchen, and a dining room perfect for entertaining. The true gem of this property is its private swimming pool, overlooking lush greenery, creating a tranquil, cooling atmosphere that's perfect for relaxation. Whether you're looking for a dream home or a high-return investment, this villa is an opportunity you won't want to miss. Secure this villa now and elevate your lifestyle while enjoying exceptional investment potential in one of Bali's premier locations!

## WE LOVE

The contemporary design and unique interior finishes

The outdoor area with greenery view

The good investment

## KEY INFORMATION

Leasehold 25 ans – Garantie de 10 ans + Extension garantie de 20 ans

Price : 230,000 USD