

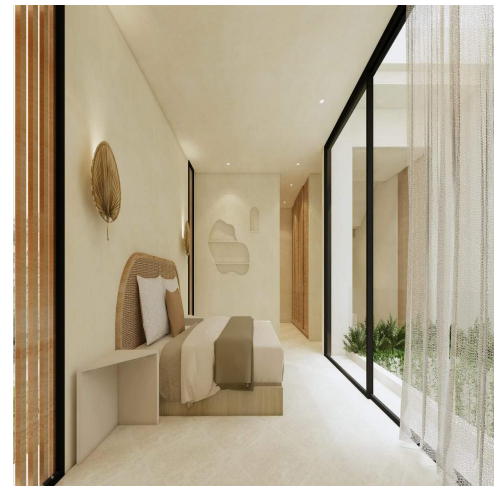


BALI – REAL ESTATE
EXCEPTION

Where your exceptional journey begins

www.stg-baliexceptioncom-
dev.kinsta.cloud
@baliexceptionsales
salesadmin@baliexception.com

OCEAN VIEW AND CLIFF FRONT OFFPLAN 2 BEDROOM VILLA FOR



Features

Property ID	BE-1800	Bathrooms	2.5
Price	\$410,000	Leasehold	29 years
Land Area	117 sqm	Delivery Date	16 months after 1st
Property Size	200 sqm		
Bedrooms	2		

Located in the very center of Bingin, this very unique villa is walking distance to some world-class beaches and popular spots—an ideal area for expats seeking a tranquil yet thriving community.

This fully furnished villa boasts two spacious bedrooms, each with its own ensuite bathroom, along with a convenient powder room for guests. The open layout features a modern, fully equipped kitchen and dining area, thoughtfully separated from the cozy living space by a lush garden, ensuring privacy and a seamless indoor-outdoor flow. With a design that prioritizes natural light and ventilation, the villa creates a serene atmosphere that connects you to the surrounding tropical environment.

Unwind by the private pool or retreat to the rooftop, where you can savor panoramic ocean views—an ideal backdrop for evening gatherings. Additionally, parking is conveniently provided for your ease.

Don't miss this chance to own a piece of paradise—schedule your viewing today and secure this stunning villa before it's gone!

WE LOVE

- The ocean view
- The rooftop
- The prime location

KEY INFORMATION

- Price: USD 410,000
- Leasehold: 29 years
- Delivery date: 16 months after 1st payment