

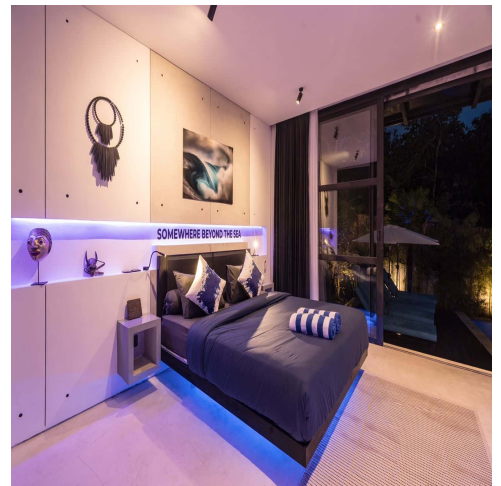
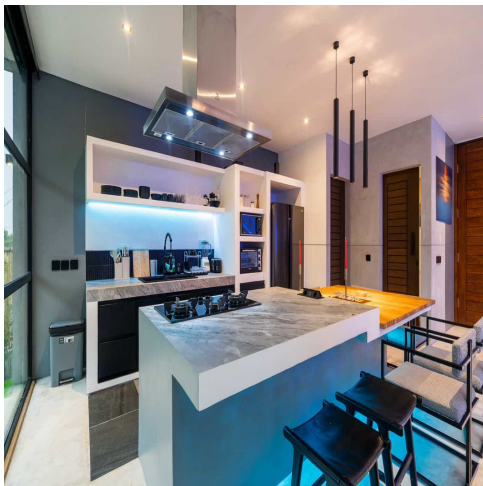


BALÍ—REAL ESTATE
EXCEPTION

Where your exceptional journey begins

www.baliexception.com
@baliexceptionsales
salesadmin@baliexception.com
+62 813 9959 4112

INDUSTRIAL MODERN DESIGN 3 BEDROOM VILLA FOR SALE



Features

Property ID	BE-2212	Bathrooms	3.5
Price	\$460,368	Leasehold	30 Years
Land Area	600 sqm		
Property Size	230 sqm		
Bedrooms	3		

Nestled in the heart of Pecatu, South Kuta, this villa enjoys a prime location near Bali's iconic destinations. It's just a short drive from Dreamland Beach, Bingin, and Padang Padang, with quick access to Uluwatu's famous surf spots, trendy cafes, and beach clubs.

The interior boasts a modern-industrial design blended with tropical flair. High ceilings, open spaces, and large windows create an airy ambiance, while artistic elements like hanging sculptures and accent lighting add character. The sunken living area is both stylish and comfortable, featuring ambient LED lighting and custom furnishings that invite relaxation and socializing.

Outside, the villa offers a lush tropical garden and a striking infinity pool with a built-in circular lounge. From the deck and pool area, you'll enjoy tranquil views of the surrounding greenery, creating a private oasis atmosphere.

This villa is a perfect blend of luxury, design, and location — ideal for those seeking a peaceful yet connected Bali retreat.

WE LOVE

The Private infinity pool with built-in circular lounge

The Prime location

The modern-industrial interior design

KEY INFORMATION

Price: IDR 7,100,000,000